

UNLEASH THE POWER OF SUSTAINABILITY WITH LIM-LOGES & MASTERS: YOUR PARTNER FOR TRANSFORMATIONAL CHANGE AND LEADERSHIP

At LLM, we're dedicated to sustainability, interweaving it seamlessly with HR to maximise your organisation's potential. In partnership with leading sustainability experts including B Purpose Bureau, The Eden Strategy Institute (Eden) and Diversity, Inclusion and Education Consultant, Gary Loke, we deliver compact, customisable workshops. These are focused on effective and versatile people strategies to navigate disruptions, manage transitions, and nurture talent, thus fortifying leaders and teams to achieve your sustainability and ESG objectives.

ESG



ENVIRONMENTAL



SOCIAL



GOVERNANCE



Lim-Loges & Masters
transforming companies, transforming careers

SOLUTIONS FOR LEADERS



Disruption Management (Part 1)

#SustainableRoadMap

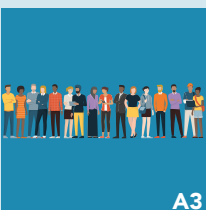
Offered in partnership with Eden Strategy Institute, this is your gateway to transforming your business into an environmentally-conscious and economically-thriving entity.



Transition Management (Part 2)

#ImpactWithPurpose

In partnership with B Purpose Bureau, this comprehensive and proactive programme is designed to clarify and optimise your organisation's social impact strategy, by blending strategic goals with a larger social purpose.



Talent Management (Part 3)

#StakeholderMgt

Helping leaders and/or those in P&L functions evaluate the impact of sustainability measures on their businesses and equipping them with the necessary know-how to tackle the most critical aspects of stakeholder management.



I was really impressed by LLM's Innovation program. The workshop was expertly planned and structured, with excellent interaction with the facilitators and mentors. Far from being a theoretical exercise, the workshop was centred around our needs and upcoming projects and deliverables. Everyone really enjoyed the workshop, and we all learnt something valuable from it. It was a great investment."

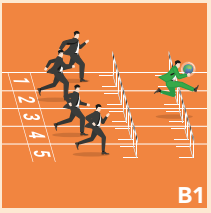
Pui Poon

Managing Director, Platinum Guild International



www.LimLogesMasters.com
China . Hong Kong . India . Thailand . Vietnam . Malaysia . Singapore
RHQ: 10 Marina Boulevard, Marina Bay Financial Centre Tower 2,
#39-01, Singapore 018983 . O: +65 6725 6341

SOLUTIONS FOR TEAMS



Disruption Management (Part 1)

#SustainathonHack

Designed in partnership with Grasp Guru, ignites innovation, nurtures sustainability, and drives social entrepreneurship for a greener future.



Transition Management (Part 2)

#ExecutionExcellence

Empowers leaders and corporations to achieve profitable sustainability. It cultivates the realisation that ethical governance and sustainability are valuable resources that foster allegiance from employees, customers, and suppliers.



Talent Management (Part 3)

#ExecPotential

Provides customised analyses, competency gap mitigation strategies, and clear, practical development plans to enhance the potential of your leadership team and drive sustainable organisational growth. the most critical aspects of stakeholder management.



SOLUTIONS FOR COMPANIES



Disruption Management (Part 1)

#InnovationMasterclass

Gives leaders with tools to drive sustainable innovation, strategically propelling their companies to the forefront and sustained success and growth.



Transition Management (Part 2)

#SustainableCulture

Utilises the GROW coaching model to infuse sustainability and ESG principles into your organisation. Through tailored educational sessions, gain a deep understanding of these values, boost efficiency, and improve retention – all while fostering a sustainable culture leading to a greener future.



Talent Management (Part 3)

#DEIRetention

Explore the transformative power of LLM's Embracing Diversity workshop and understand how our comprehensive training can drive innovation, foster sustainability and build an inclusive culture within your organisation.



OUR PARTNERS



Contact **Lelia Lim** at
Lim-Loges & Masters via email:
LeliaLim@LimLogesMasters.com



www.LimLogesMasters.com
China . Hong Kong . India . Thailand . Vietnam . Malaysia . Singapore
RHQ: 10 Marina Boulevard, Marina Bay Financial Centre Tower 2,
#39-01, Singapore 018983 . O: +65 6725 6341